

Special points of interest:

May 17, 10 am-6pm— Howard Steamboat Museum Spring Festival, Jeffersonville, IN, GRW book table in Author's Row. For \$3 you can join the fun outdoors.

June 14, 3-5 pm— GRW reading at Widdershins, 712 Lyndon Lane. Please join us.

July 16 – Summer Board Meeting, 6 pm. 103 Logsdon Ct, Louisville

July 17-20 -- Summer Retreat, Kavanaugh Center, Crestwood

Nov 6-9 -- Poetry Retreat, Kavanaugh Center, Crestwood

Inside this issue:

NIPW 08 Gets Books In Door	2
Beyond the Words	3
Wednesday Afternoon at Ruby Tuesdays	4
Personal & Professional Notes	5
Calendar	6

Green River Writers

Volume 13, Issue 2

From the President's Desk

Hello, GRW Members,

After starting our winter/early spring with the Winter Retreat and finishing off with the March NIPW conference, we hope you're set for an equally busy late spring/summer. Back in February, we held an enjoyable and successful Submissions Day and we look forward to another just like it. Rather than setting a date at this time, we're asking that those interested give us an email or a call, and we'll plan this event to suit you. It works like this: you bring your work (individual poems, a short poetry collection, pieces of short fiction or essays) and you leave with envelopes stuffed and stamped and ready to drop into the mailbox. Also welcome will be any markets guides and sample copies of journals you'd like to share.

Another word concerning our Winter Retreat at the Kavanaugh

Center: this event was extraordinarily productive and fulfilling in every way. Our meeting room, equipped with microwave, coffee maker, refrigerator and plenty of room to prepare food, eat, socialize and work, proved to be a cozy and efficient environment, and the lovely grounds, complete with lake and walking paths, served to inspire and entertain. If you were unable to be there in January, we hope you'll be able to try us in July. You'll find a registration box elsewhere in this Newsletter.

We were pleased to see, in a recent *Courier Journal* arts & entertainment section, the large photo and article about our friend, Curt Tofeland, who is soon to retire from the Shakespeare in the Park Festival. Though we'll miss him on those warm summer evenings near the stage in Central Park, we wish him well in his future endeavors.

Other events, community-wide and otherwise, involving GRW members are listed in this Newsletter, and we hope you'll take advantage and come out for these. The Howard Steamboat Museum festival was a most enjoyable event last May and we became acquainted with a nice group of regional authors. Some unusual craft booths as well as presentations and tours throughout the afternoon kept us well entertained.

Another upcoming opportunity will be the GRW event at Widdershin's, on Lyndon Lane. This is a unique boutique, which sells crystals, jewelry, herbs, candles, CD's, belly dancing equipment and who knows what all. They also host lecture series classes in Reiki and meditation. GRW members interested in participating in reading, may present poetry or prose. Please call Barbara Greer, 637-2892.

(continued page 5)

Green River Writers

BOARD OF DIRECTORS

Mary O'Dell (Lifetime)
 Judy Milford, Chair (09)
 Gail Chandler (09)
 Cate Pearson (09)
 Mark Brown (08)
 Jerry Bratten (08)
 Georgia Wallace (08)

OFFICERS

Mary O'Dell
 President
 Terri Alekzander
 Treasurer
 Barbara Greer
 Secretary
 Judy Milford
 Historian
 Georgia Wallace
 Newsletter Editor

ADVISORY BOARD

Dianne Aprile
 Liz Bevarly
 Bill Cobb
 Jean Dams
 Kit Ehrman
 Michael Garrett
 Shelley Goldbloom
 Richard Hague
 James Baker Hall
 Mary Ann Taylor Hall
 Teri McLaren
 Elaine Palencia
 Joy Pennington
 Lee Pennington
 Ruth Redel
 Dorothy Sutton
 Steve Womack

THANKS

THANKS to . . . poetry and prose meeting hosts January-April, 2008 – **Patrice Pittman, Victoria Rose, Gail Chandler and Mary O'Dell.**

Thanks to **Virginia Anderson, Deanna Hopper and Mary O'Dell** for representing GRW at the Public Radio Partnership Fun Drive in April.

Thanks to **Jeff Yocom**, Mr. NIPW, who once again headed up a superb retreat. And thanks to his helpers, **Julie Kagawa, Tricia Sanderson and Jerry Bratten**, and to all our excellent instructors, editors and agents.

Thanks much also to our contest director **Terri Alekzander** for taking on this major job.

Also, thanks to **Terri Alekzander, Judy Milford and Christine Strevinsky** for the wonderful food they furnished at our January retreat.

NOVELS IN PROGRESS WORKSHOP 08 GETS BOOKS THROUGH THE DOOR

What do you get when you take 38 aspiring novelists, add five distinguished instructors with dozens of published novels among them, throw in four agents and editors, and turn up the creative heat for a full week? The answer is Novels In Progress Workshop 2008, which met from March 9 to 16, on the campus of Spalding University.

During the week, NIPW participants enjoyed daily breakout sessions and one-on-one mentoring under the distinguished faculty of Andrew Beahrs, Elizabeth Bevarly, Jeanne M. Dams, Julianne Lee, and Elaine Fowler Palencia. The week's educational sessions concluded on Friday, when literary agent Brandi Bowles delivered the Publishing Industry Keynote presentation on "Writing and Selling Your First Book."

Closing weekend activities highlighted agent and editor guests from literary agencies and publishing houses across the country. Saturday morning kicked off with a rousing Agent & Editor panel discussion that provided an insider's perspective of the publishing industry. Later that afternoon, conference participants engaged panelists in one-on-one pitch

meetings that led to many requests for partial and full manuscripts. This year's Agent & Editor panel included Brandi Bowles, from the Howard Morhaim Literary Agency, Paul S. Levine, of the Paul S. Levine Literary Agency, Laurie McLean, from Larsen Pomada Literary Agents, and Lynn Price, of Behler Publications.

Special thanks go out to the Novels in Progress Workshop volunteers whose help before and during the conference made it a success. Much kudos to **Jerry Bratten, Julie Kagawa, and Tricia Sanderson.**

MEMBER NEWS

EMAIL UPDATES

Armando Feler – armandofeler@earthlink.net

NEW ADDRESS

Carlton Hill, 3939 Erla Ave # 3160, Cincinnati, OH, 45208

NEW MEMBERS

Jeana Fleitz
Lucinda Coffman
Carol Moore
John Brunner
Diane Jordan-Grizzard

BEYOND THE WORDS

by Mark Russell Brown

The Grauballe Man

Seamus Heaney

As if he had been poured
in tar, he lies
on a pillow of turf
and seems to weep

the black river of himself.
The grain of his wrists
is like bog oak,
the ball of his heel

like a basalt egg,
His instep has shrunk
cold as a swan's foot
or a wet swamp root.

His hips are the ridge
and purse of a mussel,
his spine an eel arrested
under a glisten of mud.

The head lifts,
the chin is a visor
raised above the vent
of his slashed throat

that has tanned and toughened.
The cured wound
opens inwards to a dark
elderberry place.

Who will say 'corpse'
to his vivid cast?
Who will say 'body'
to his opaque repose?

And his rusted hair,
a mat unlikely
as a foetus's.
I first saw his twisted face

in a photograph,
a head and shoulder
out of the peat,
bruised like a forceps baby,

but now he lies
perfected in my memory,
down to the red horn
of his nails,

hung in the scales
with beauty and atrocity:
with the Dying Gaul
too strictly compassed

on his shield,
with the actual weight
of each hooded victim,
slashed and dumped.



The Dying Gaul, a Roman marble copy of a Hellenistic work of the late third century BCE Capitoline Museums, Rome

In "The Grauballe Man," Heaney uses the trope of land as womb and invokes both biblical and pagan allusion in the messy birth of the Grauballe man. The land cries with the voice of a brother's blood and out of its mouth extrudes Able's corpse that has "weep[ed]/ the black river of himself." The boglands become a muddy Eden and Underworld with the shadows of first violence and the River Styx.

Heaney provides a list of ingredients to create the "vivid cast" of the corpse that reads like spell components—bog oak, basalt egg, swan's foot, swamp root, mussel, eel, and elderberry. These items are like the apothecary of the midwife attending the birth of murder. Implication becomes direct statement when the Grauballe man's "rusted hair" is compared to the hair of a foetus, and he is remembered as emerging "out of the peat, / bruised like a forceps baby." Like a new parent, Heaney takes an inventory of parts—wrist, foot, hips, spine, head...until he reaches the cut throat, which is described as a "cured wound." This description sets up a creative tension that helps the reader think of a human as a being and a piece of meat. It's a pun elevated to art. He finishes the image by suggesting that preserving the taste for violence requires "a dark elderberry place" where the color and flavor of elderberry wine could be preserved.

He has included allusions to several cultures and mythologies to have us look at birth and death all at once. And as if that is not enough, he throws in the scales of justice. In one pan is the twisted, grotesquely beautiful, too vividly preserved corpse of murder, and in the other, he places the terrifyingly beautiful, horribly idealized Celtic victim of murder. The exacting marble proportions of the Dying Gaul mock the distorted akimbo of the Grauballe Man. Heaney shows us the ugly birth of violence and the cold beauty of exalting and perpetuating it. He does it with a great command of language and choice of details. He binds birth and death, Eden and Hades, the ugly and the beautiful to share his reaction when confronted with the well-preserved bog mummy, which in turn supplies rich subtext and insight.

Green River Writers



WEDNESDAY AFTERNOON AT RUBY TUESDAY'S

by Gail Chandler

After brownies and ice cream
she lays a pristine
laminated
Medicare card
on the table.

Her two friends
tilt their heads, nod.

She rises, tucks the card
into her pocket.
*I've lost my identity, she says.
I have an appointment
with a thirty-year-old
life coach.
She's supposed to find it.*

Markets & Opportunities

**A continuation of small
presses and journals
in Kentucky**

Appalachian Heritage, CPO
2166, Berea, KY 40404 (Editor
George Brosi) wants work re-
lated to Appalachia.

The Licking River Review,
Dept of Literature & Language,
Northern Kentucky University,
Highland Heights, KY, 41099.
Send 5 poems max, none over
50 lines, to Poetry Editor. Ac-
cepts submissions August-
December.

The Mad Hatter, 320 S. Semi-
nary Street, Madisonville, KY,
42431 (Editor Ron Watson).
Send 3-6 poems.

Kentucky Monthly, 213 St.
Clair Street, Frankfort, KY
40601 (Jackie Bentley, assoc
editor) wants stories about Ken-
tucky and by Kentuckians or
those with some Kentucky con-
nection. Needs adventure, his-
torical, mainstream and novel
excerpts. Pays \$50-\$100.

Pikeville Review, Pikeville
College, Sycamore St, Pikeville,
KY 41501 (Sydney England,
contact person) wants poetry,
fiction, essays, reviews and short
-shorts. Word limit 15,000
words, average prose piece is
5,000 words.

From Huckleberry to Possum Trot

A Jess Wilson reader

This book collects the majority of the
popular Kentucky writer's oeuvre. It is a
must read for those interested in the pio-
neer families and their offspring of Clay
and surrounding counties in Southeast
Kentucky. The stories reflect the good hu-
mor for which Mr. Wilson has been
known for over half a century.

Available at Lulu.com
or from
Clay County Genealogical
and Historical Society
\$25.00

Watermark

AVAILABLE NOW

GRW co-founder and
novelist, Jim O'Dell's
bizarre and darkly hu-
morous tale of one man's
survival against all odds

\$22.95

Plus \$2.50
postage & handling

Send check or money
order to: Mary O'Dell,
103 Logsdon Ct, Louis-
ville, KY 40243 or email
mary.odell@insightbb.com

Personal & Professional Notes

Sheri Wright read from her new collection *Nuns Shooting Guns* on April 19 at the Carmichael's on Frankfort Avenue. Published by Floodcrest Press, the collection is at Destinations Booksellers and at Carmichael's Bookstore.

Jean Tucker's poem "Sierra Leone, Making Tea" recently appeared in *The Sow's Ear Journal*.

Barbara McMakin placed in the recent *Writer's Digest* competition with her poem "Photograph of the Year"

Scott Slucher has authored a script for a short film, shot locally in March.

Patrice Pittman's poem "Pieces of My Heart" appeared in the spring edition of *Once Upon a Time*

Curt Tofteland, friend and workshop leader of GRW, has recently stepped down as artistic director of the wildly successful Shakespeare in the Park Festival and Shakespeare Behind Bars. Curt will be staying with the Shakespeare Festival through September, 2009, in an advisory capacity. Thanks, Curt, for all you have given.

Jean Tucker and Gail Chandler placed in the recent *Literary Leo* competition and participated in the presentation reading at The Jazz Factory in January.

An article by **Beverly Bartlett** can be found in the 2008 *Novel and Short Story Writer's Market*.

Angela Jenkins's poem "Breadline" appeared recently in *The Griffin*, Gwynedd-Mercy College in Pennsylvania. Angela has also contracted to write six articles for *Kentucky Gardening Magazine*.

Gail Chandler, Anna Lucas and Mary O'Dell received special mention in the Craigeigh Press Competition.

Christine Strevinsky took a first place in Louisiana State Poetry Society's contest; 11 more of her poems also placed in this competition.

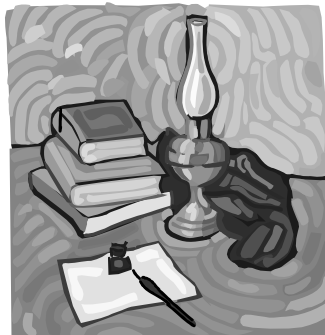
Stephanie Allison's paintings were featured in the December-February Artemesia Art Show on Market Street in Louisville.

Becky Alexander and Wendy Visser launched their chapbook collection *Haiku by Two* (Craigeigh Press) in March. This seasonal nature collection may be ordered by writing Craigeigh Press, 453 Westminster Drive South, Cambridge, Ontario, Canada, N3H 1T5

Julie Segal's hand puppets and kits are for sale @ Kentucky Backroads Gallery, Third and Chestnut. For special orders, you may reach Julie at 502-454-2479.

CONGRATULATIONS! to **Eve Bohakel** and John Lee on the birth of their daughter, Miriam Evelyn Bohakel Lee, born December 21.

CONDOLENCES to **Mark Brown** on the death of his brother, Frank Isom, who died in January.



From the President's Desk (continued)

And don't forget to spice up your spring and summer by coming out for a regular prose or poetry meeting. This time of year, there's always a celebratory air at these gatherings, and I've even heard someone say these were her favorite days of the month.

So, whatever else you do on these pretty days, take a notebook and pen and awhile for yourself, and sit in the sunshine and write something.

Your prez,

Mary "Ernie" O'Dell

POETRY MENTORING SESSIONS

by Mary O'Dell -- Both group and individual sessions are still being offered as follows:

Thursday morning group, 10 am – 1 pm at Jitters Café in Crestwood -- \$20 per session

Anyone interested in a second, evening session for fall should call 502-245-4902 or 502-552-9578, or email Mary.Odell@insightbb.com. This group will be formed, should there be enough interest.

Individual sessions as requested – 103 Logsdon Court, Douglass Hills -- \$10 per hour

On-line or regular mail submissions for edit or critique – send to 103 Logsdon Court, Louisville, KY 40243 -- \$1 per page.

Writers Helping Writers

Over the past twenty years, Green River Writers, Inc. a non-profit organization, has steadily encouraged the fellowship of writers of all genres, and developed a variety of programs designed to accommodate the novice and the experienced. Green River Writers' primary goal is to provide an atmosphere of encouragement and support where writers can freely share ideas and opinions. Our policy is to critique without expressing personal value judgment of content, thus enabling members to express themselves on any subject.

Green River Writers, Inc

103 Logsdon Court
Louisville, KY 40243

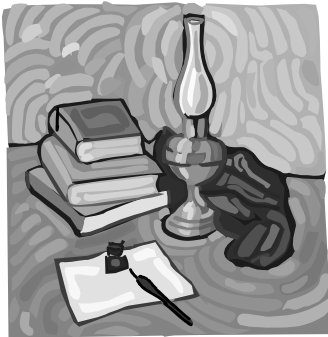
Phone: 502-245-4902

E-mail: mary.odell@insightbb.com

NON-PROFIT ORG.
U.S. POSTAGE
PAID
LOUISVILLE
PERMIT NO. 1751

We're on the Web!

www.greenriverwriters.org



Calendar

Poetry

May 3

Georgia Wallace
11706 Frank Ave 40243
244-5001

June 7

Julie Segal
4321 Brookhaven 40220
454-3579

July 5

Betty Stuedle
208 Ash Ave, Pewee Valley 40056
241-4443

August 2

Sheri Wright
114 Bayly Ave. 40206
899-3737

Poetry meetings begin at 6:30 p.m.

Prose

May 4 (to avoid Mother's Day)

Ernie O'Dell
103 Logsdon Ct 40243
245-4902/552-9578

June 8

Ernie O'Dell
103 Logsdon Ct 40243
245-4902/552-9578

July 13

Ernie O'Dell
103 Logsdon Ct 40243
245-4902/552-9578

August 10

Ernie O'Dell
103 Logsdon Ct 40243
245-4902/552-9578

Prose meetings begin at 2:30 p.m.