

Special points of interest:

Nov 6-9
Poetry Retreat,
Kavanaugh Center,
Crestwood

Jan 15-18, 2009
Winter Retreat (all
genres), Kavanaugh
Center, Crestwood

Mar 15-22, 2009
GRW Novels-in-
Progress Work-
shop, Spalding Uni-
versity Campus,
Louisville

Inside this issue:

What Writers Read	2
Beyond the Words	3
Nobody Needs A Semi-colon	4
Personal & Professional Notes	5
Calendar	6

Green River Writers

Volume 13, Issue 3

From the President's Desk

Greetings, Writers –

As usual, we are gearing up for fall activities. The annual GRW Poetry Retreat, November 6–9, will be held at Kavanaugh Center in Crestwood, Kentucky. This gathering provides an atmosphere for writing in the seclusion of your room, as well as the opportunity to join in critiquing and writing sessions. Please register ASAP as rooms fill quickly. Call 502-245-4902 or see the registration form on page 3.

Don't forget the annual Kentucky State Poetry Society Fall Poetry Roundup, which includes workshops and awards banquet, to be held at Pine Mountain State Resort Park in Pineville, KY, October 17–19. We mention this because the poetry segment of GRW acts also as a chapter of KSPS, having similar goals and interests.

For reservations call, 1-800-325-1712. For further information visit www.kentuckystatepoetsociety.org.

We've added a couple of new features to your Newsletter, and we'll be eager to hear if you enjoy them. One of these is our "What Writers Read" column, kicked off by GRW member Gail Chandler. As time goes on, we hope many of you volunteer your own reading list or just pick one (poetry or prose) and write a mini-book review.

Take advantage of another chance to share your work by sending a short piece to the "Green River Writers Newsletter." We'll accept poems (1 page), flash fiction or creative nonfiction 250-300 words from **members only**.

One other small addition to our newslet-

ter is the Fix-It Corner, designed to offer a quick grammar tip each issue. If you're interested in getting the whole meal instead of just a tidbit, go to your favorite bookstore and ask for *Merriam-Webster's Notebook Guide to Punctuation*.

We were glad to learn from Mark Brown, our "Beyond the Words" columnist, that though he's moved to San Francisco and is going to school there, he will continue offering us his words of wisdom.

Okay, then. We hope that as you plan your next few months, you'll take advantage of some of the upcoming activities. Remember, without you, we wouldn't exist! Hope to see you somewhere soon.

Your Prez

Mary "Ernie" O'Dell

Green River Writers

WHAT WRITERS READ

by Gail Chandler

For years my standard line has been, "I can read books or I can read *The New Yorker*." With visions of dying under an avalanche, I mostly read the magazine. Meanwhile a pile grew on my nightstand, threatening to become a landslide. I needed to read good books to fill a gap in my academic background.

I began my self-improvement reading program by clearing the bedside table one item at a time. I read two self-published autobiographies, three years of *The Sun*, a book my father gave me of collected 1837 newspaper articles about a Clay County murder, a year of *Byline*, an AARP book on caring for your parents, *Rwanda Conflict*, about everything except a partridge and a pear tree. It took four months.

I am addicted to audiobooks from decades of commuting, ironing and other mindless tasks. I was listening to what the library had available, mainly detectives and romances.

I started audio books selections that I wanted to read but that threatened to put me to sleep: *Moby Dick*, *The Hunchback of Notre Dame*, *20,000 Leagues Under the Sea*, *Ulysses*, *A Thousand Splendid Suns*, *Born on a Blue Day*, *Tis*, *A Monk Swimming*. A Christmas subscription to Audible made these choices affordable.

After I finished the pile, I went through the house looking for books on my Want-to-Read list. I selected ten including *River of Earth*, *Clay's Quilt*, *100 Years of Solitude*, and *Soweto Inside Out*. I am now happily working my way through this list and look forward to selecting my next ten books.

I am keeping track of my books via Shelfari, a website where others share their reading lists. And in the downstairs bathroom, I have a monster stack of *The New Yorker*.

MEMBER NEWS

NEW MEMBERS

Scott Solomon, Champaign, IL; **Chris Helvey**, Frankfort, KY; **Portia Pennington**, Bowling Green, KY; **Ellaraine Lockie**, Sunnyvale, CA; **Carol Glover**, Southbury, CT; **Julia Helen Wight**, Seattle, WA; **S. T. Allen**, Danville, KY; **Grege Lindseye**, Richmond, KY; **Frances Strickler**, Franklin, KY; **Roger Collins**, Cincinnati, OH; **Lucinda Coffman**, Shelbyville, KY

ADDRESS CHANGES

Mark Brown—1153 Bush Street, San Francisco, CA 94109

Darlene Pate — 6004 Table Mountain Ave, Louisville, KY 40214

E-MAIL/PHONE

Mark Brown — mbrown9@art.edu

Mark Brown— 502-489-2575

Darlene Pate— 366 -8900

BOARD OF DIRECTORS

Mary O'Dell (Lifetime)
Judy Milford, Chair (09)
Gail Chandler(09)
Cate Pearson (09)
Jerry Bratten (10)
Jean Tucker (10)
Georgia Wallace (10)

OFFICERS

Mary O'Dell
President
Terri Alekzander
Treasurer
Barbara Greer
Secretary
Judy Milford
Historian

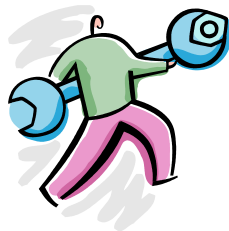
Georgia Wallace
Newsletter Editor

Sherry Chandler
Webmaster

ADVISORY BOARD

Dianne Aprile
Liz Bevarly
Bill Cobb
Jean Dams
Kit Ehrman
Michael Garrett
Shelley Goldbloom
Richard Hague
James Baker Hall
Mary Ann Taylor Hall
Teri McLaren
Elaine Palencia
Joy Pennington
Lee Pennington
Ruth Redel
Dorothy Sutton
Steve Womack

Green River Writers Newsletter is published quarterly by Green River Writers, Inc. 103 Logsdon Ct. Louisville, KY 40243



FIX-IT CORNER

Ever confused about ACTIVE and PASSIVE voice?? Here's the difference: Active voice is a verb form indicating that the subject of a sentence is performing the action, as opposed to Passive voice, in which the verb form indicates that the subject of the sentence is being acted upon. To wit: "A bird was singing." "Interest rates rose." are both active voice. "He is respected by others." "Dinner will be cooked by Father" are passive voice. There are legitimate uses for both voices in any kind of writing, but active voice is preferred, since it feels more energetic.

BEYOND THE WORDS

by Mark Russell Brown

This article is dedicated to Barbara who cried out, "No more!" and my family who recently lost our oldest brother.

Talking to Grief

by Denise Levertov

Ah, Grief, I should not treat you
like a homeless dog
who comes to the back door
for a crust, for a meatless bone.
I should trust you.

I should coax you
into the house and give you
your own corner,
a worn mat to lie on,
your own water dish.

You think I don't know you've been living
under my porch.
You long for your real place to be readied
before winter comes. You need
your name,
your collar and tag. You need
the right to warn off intruders,
to consider
my house your own
and me your person
and yourself
my own dog.

Sometimes content is the main player in a poem, and so it is with "Talking to Grief" by Denise Levertov. She addresses her grief directly wrapping it in a simple extended metaphor of a person's best friend. With grief on a leash she knows that it changes from a snarling thing with fangs to a piteous creature needing warmth and shelter.

Although the speaker is addressing her own mongrel grief, she is also giving readers advice on what to do with their own. It deserves more than the scraps of your attention. Ready a space for it, then tempt it in. Trust that it's not there to hurt you but to lick wounds that loss inflicted.

Levertov uses a free form structure to let the content find its "real place." Her line breaks are used to emphasize words and pace the reader. Also in the third stanza, lines four and six, the line breaks emphasize the main concept of the poem – grief has needs. And the part of this concept that Levertov wants readers to take with them is used to end the poem. Without accepting grief as part of us, we become unable to defend our boundaries. "You need/ your name,/ your collar and tag." Grief needs ownership and legitimacy. "You need/ the right to warn off intruders." Once we feel the right to our own emotions, good and bad, we have the bite to protect what is ours.

FALL POETRY RETREAT REGISTRATION			502-245-4902
Mail to: POETRY RETREAT, Green River Writers, Inc., 103 Logsdon Court, Louisville, KY 40243			
_____ Single room, Thu. Nov 6	\$40	_____ Shared room, Thu. Nov 6	\$20
_____ Single room, Fri. Nov 7	\$40	_____ Shared room, Fri. Nov 7	\$20
_____ Single room, Sat. Nov 8	<u>\$40</u>	_____ Shared room, Sat. Nov 8	<u>\$20</u>
Total Single _____		Total Shared _____	
_____ Non-refundable deposit \$50	_____ Registration \$15	TOTAL FEES/DEPOSITS ENCLOSED \$ _____	
Name: _____			
Address: _____			
City: _____		State: _____	Zip _____
Phone: _____		E-mail: _____	

Green River Writers

Markets & Opportunities



IN MEMORIAM

Robert Franklin Pate, died Derby Day, 2008. Bob was one of our founding members and served as our first treasurer. Bob served three tours of duty in Viet Nam and gave us two poetry chapbooks, *The Silent War* and *The Boomerang Poems*.

He will be missed.

MEMBERSHIP DUES INCREASE

Effective July 2008
membership dues are
\$25 per year

Student dues
(18 or older)
\$20 per year

For membership
renewal or information,
contact: Mary O'Dell,
Green River Writers,
103 Logsdon Ct.,
Louisville, KY 40243
(502) 245-4902

Apex, Jason Sizemore, editor. To read about this new journal/press, click apexbookcompany.com. "It's where sci-fi and horror collide." This is a new company, not yet taking submissions but will soon. Subbing online only. They will be taking fiction to 10,000 words.

Mitakuye Oyasin (We Are All Related), the Kentucky Poetry Society Newsletter (editor Tony Sexton, offers a competition for each issue (KSPS members only; many of our GRW members belong to KSPS and may wish to submit). Send submissions to Tony Sexton, KSPS, 700 Sparrow Lane, Waxing Moon Farm, Harrodsburg, KY 40330. Please read *Mitakuye Oyasin* for guidelines. Entry fee is \$2 one poem, \$5 three poems. Details available at content-edme@hotmail.com.

Flowers & Vortexes is a new Creative Magazine. For details, email sirjames@iglou.com or go to www.promiseoflight.org.

Bust Down the Doors and Eat All the Chickens, A Journal of Absurd and Surreal Fiction. Submissions to bust_submissions@hotmail.com. Queries to bradleysands@comcast.net. Fiction 2000-5000 words, that does not fit comfortably into any genre. Send for further guidelines.

Once Upon a Time, a magazine for children's writers and illustrators, wants articles up to 900 words on writing and/or illustrating for children. Also, writing/illustrating related poetry. No fiction. Send to Audrey B. Baird, editor, *Once Upon a Time*, 553 Winston Court, St. Paul, MN 55118.

NOBODY NEEDS A SEMI-COLON

By Mary Jo Stevens

In dreams sometimes I type out the words being said on a manual typewriter. My fingers move faster than when I'm awake. Waiting for the long words like *ubiquitous*, like *extraterrestrial*, my fingers poise over the keys in anticipation of coming punctuation.

Fingers wait to transcribe what happens next
waiting for context
waiting for meaning to be made
waiting to dictate onto paper the shadows who know
what evil lurks in the heart.

In dreams sentences are short and their meaning often obscure. The most common word is "I." Although words like *superfluous* can be heard when awake, the characters in dreams don't appear interested in helping me improve my keyboard skills or locating the semi-colon.

Personal & Professional Notes

Barb McMakin and **Gail Chandler** were finalists in the recent Joy Bale Boone competition sponsored by *The Heartland Review*, Elizabethtown Community and Technical College.

Gail Chandler had three poems accepted by *Mississippi Poetry Journal*.

Barb McMakin's poem "Going Home" has earned her the title of 2008 Senior Poet Laureate for Amy Kitchener's Angels Without Wings Foundation.

Sheri Wright had poems accepted by *Out of Line*, *The Cheron Review*, *New Southerner* and *Pegasus*. Sheri has also been holding signings/readings for her recently published chapbook, *Nuns Shooting Guns*, the latest held at Destinations Book-sellers in New Albany, IN.

Becky Alexander, Anna Lucas, Barbara McMakin, Ellen Birkett Morris, Betsy Packard, Virginia Anderson, Steve Weigenstein, Janice Wiley Dorn, Mary Stewart, Betty Stuedle and **Sheri Wright** were winners in the recent Green River Writers writing competition. Entries were received from 27 states and Canada, 525 entries in all.

Mary O'Dell placed in the Arkansas Writers' Conference 2008 competition. Her poem "In an Indiana Forest" was accepted by *Tipton Poetry Journal*. She also has work appearing in *Passager*. Her poems "Walking This Labyrinth" and "Safekeeping" were published in *Ruminate Literary Journal*.

Patrice Pittman has had a poem published by *Once Upon a Time*.

Jean Tucker had a poem published in the April *Tipton Poetry Journal*.

Harriet Leach's work has appeared recently in *The Louisville Review* (1 poem), *63 Channels* (3 poems), *Awakenings Review* (5 poems), *Cellar Poets* (2 poems).

Judy Gill Milford's poem was published in *Paducah Life*, and her short essay on Martin Luther King appeared in the latest issue of *Passager*.

Marietta Ball is winner of the *Mita-kuye Oyasin (We Are All Related)* quarterly newsletter poetry competition.

Gail Chandler's poems were also chosen for publication here.

Lucinda Coffman's short story "Karst" was accepted by *The Massachusetts Review*.

Roger Collins's play *Pomp and Circumstance* was performed June 20, 2008, during the 9th Annual Juneteenth Jamboree of New Plays at Actors' Theatre in Louisville.

Julie Segal has received a grant from the Louisville Metro Public Health and Wellness Center for Health Equity to publish and distribute her booklet *Volunteer Work: Your Best Antidote to the Stigma of Mental Illness*.

Southern Indiana Writers to read at Carmichael's Bookstore on Frankfort Avenue in Louisville on September 4 from 7-9 p.m. This well-established local group includes **Marian Allen** and several other Green River Writer members.

THANKS

THANKS to . . . poetry and prose meeting hosts May-August, 2008 – **Georgia Wallace, Betty Stuedle, Julie Segal** and **Mary O'Dell**

Thanks to all who participated and offered up food and other TLC services during our July Retreat.

Thanks to all who participated in our Widdershins Reading, held on June 14. Special thanks to **Barbara Greer**, who made arrangements for this event.

Thanks to contest sponsors for GRW's 2008 contest, recently past. They were: **Jane M. Garry, Marj Bixler, Mary O'Dell, Terri Alekzander,**



Jean Tucker, Tim Dawe, Clear Creek Writers, Alan MacKellar, Becky Alexander, Ruth Falk Redel, Barbara McMakin, Judy Milford, Sherry Chandler, Bar-room Bards and **Anna Lucas**. A *special thanks* to **Terri Alekzander**, faithful and hardworking contest chair.

Thanks to outgoing board member **Mark Brown** for his years of service and to **Georgia Wallace** and **Jerry Bratten** who remain on the board.

POETRY MENTORING SESSIONS

by Mary O'Dell -- Both group and individual sessions are still being offered as follows:

Thursday morning group, 10 am – 1 pm at Frascelli's in Crestwood -- \$20 per session

Anyone interested in a second, evening session for fall should call 502-245-4902 or 502-552-9578, or email Mary.Odell@insightbb.com. This group will be formed, should there be enough interest.

Individual sessions as requested – 103 Logsdon Court, Douglass Hills -- \$10 per hour

On-line or regular mail submissions for edit or critique – send to 103 Logsdon Court, Louisville, KY 40243 -- \$1 per page.

Writers Helping Writers

Over the past twenty years, Green River Writers, Inc. a non-profit organization, has steadily encouraged the fellowship of writers of all genres, and developed a variety of programs designed to accommodate the novice and the experienced. Green River Writers' primary goal is to provide an atmosphere of encouragement and support where writers can freely share ideas and opinions. Our policy is to critique without expressing personal value judgment of content, thus enabling members to express themselves on any subject.

Green River Writers, Inc

103 Logsdon Court
Louisville, KY 40243

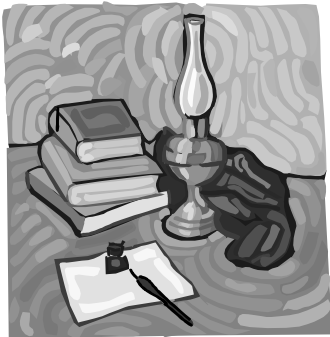
Phone: 502-245-4902

E-mail: mary.odell@insightbb.com

NON-PROFIT ORG.
U.S. POSTAGE
PAID
LOUISVILLE
PERMIT NO. 1751

We're on the Web!

www.greenriverwriters.org



Calendar

Poetry

September 6

Sandy Daugherty
4523 Blenheim Ave, 40207
893-8027

October 4

Deanna Hopper
2121 West Main St, 40212
774-4234

November 1

Sheri Wright
114 Bayly Ave. 40206
899-3737

December 6

Christine Strevinsky
226 Mill Falls St, Shepherdsville 40165
502-428-6236

Poetry meetings begin at 6:30 p.m.

Prose

September 14

Ernie O'Dell
103 Logsdon Ct 40243
245-4902/552-9578

October 12

Ernie O'Dell
103 Logsdon Ct 40243
245-4902/552-9578

November 9

Ernie O'Dell
103 Logsdon Ct 40243
245-4902/552-9578

December 14

Ernie O'Dell
103 Logsdon Ct 40243
245-4902/552-9578

Prose meetings begin at 2:30 p.m.